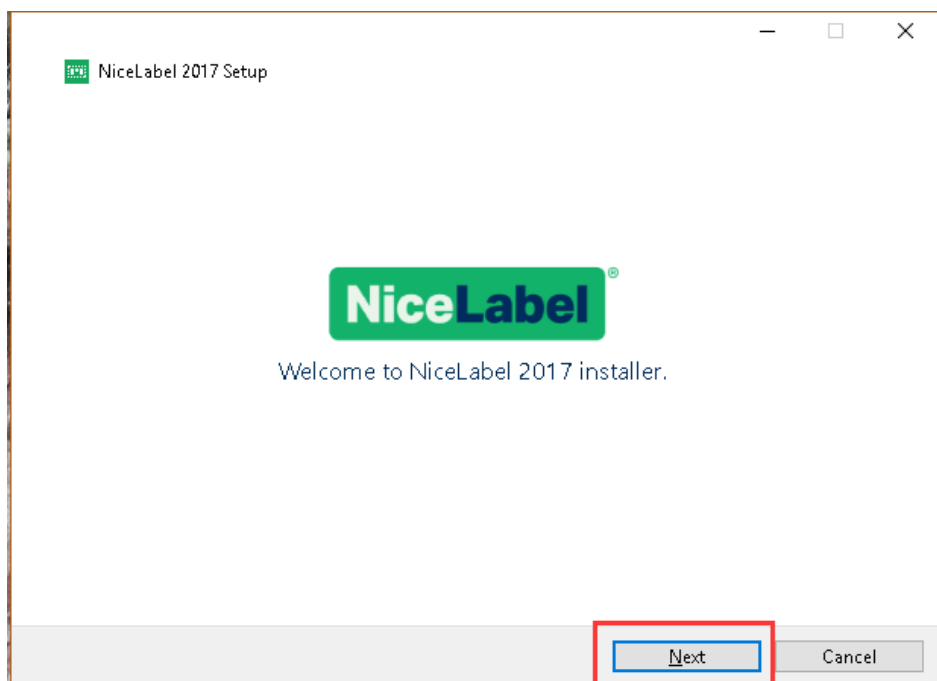


Install Printing Software

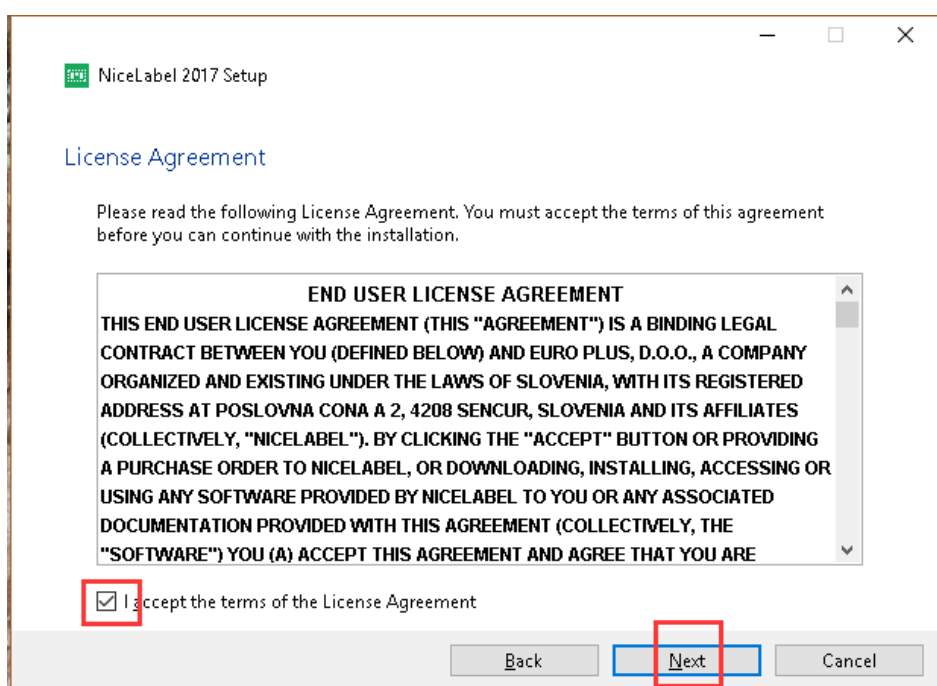
1- Click "Nicelabel2017"



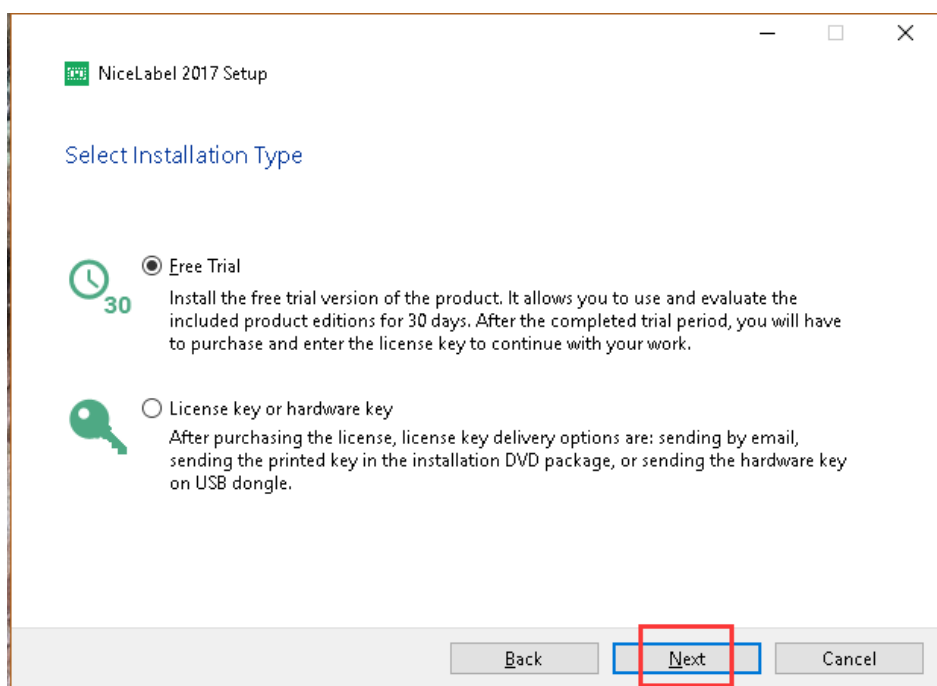
2- Click "Next"



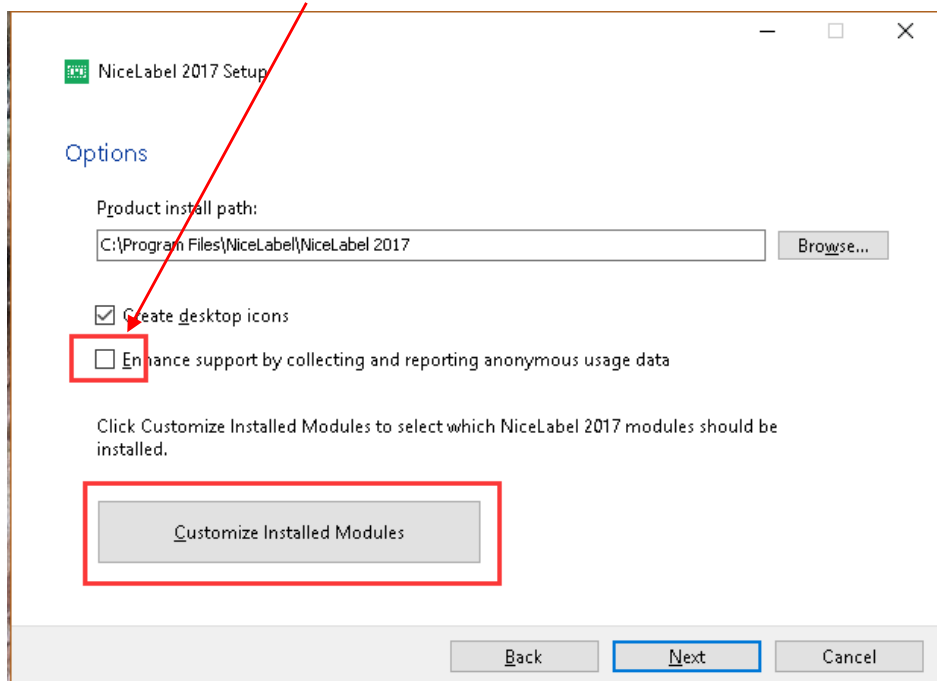
3- Select "I accept the ..." and Click "Next"



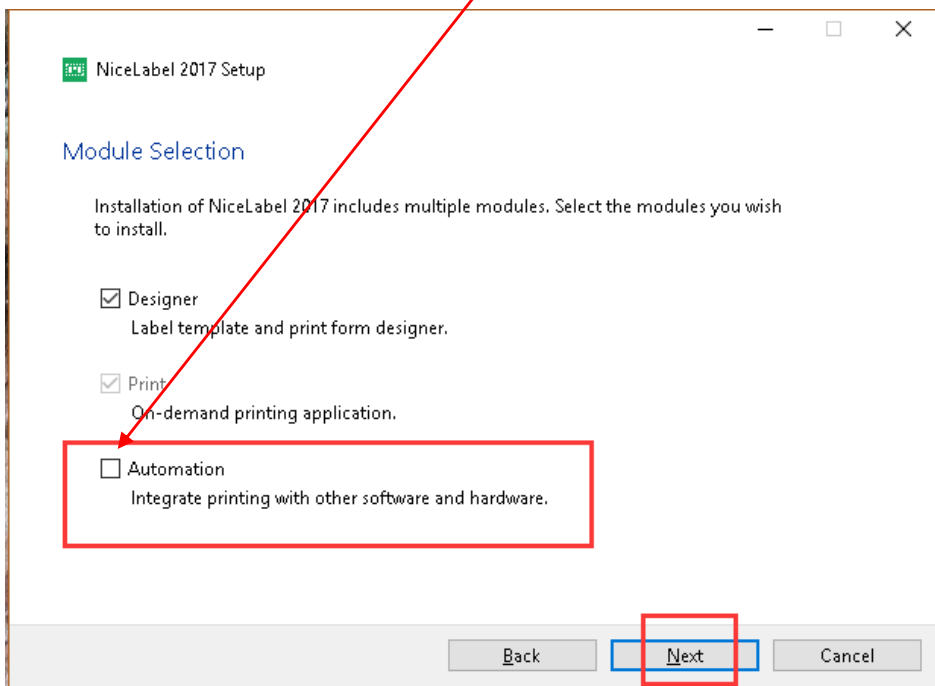
4- Click "Next"



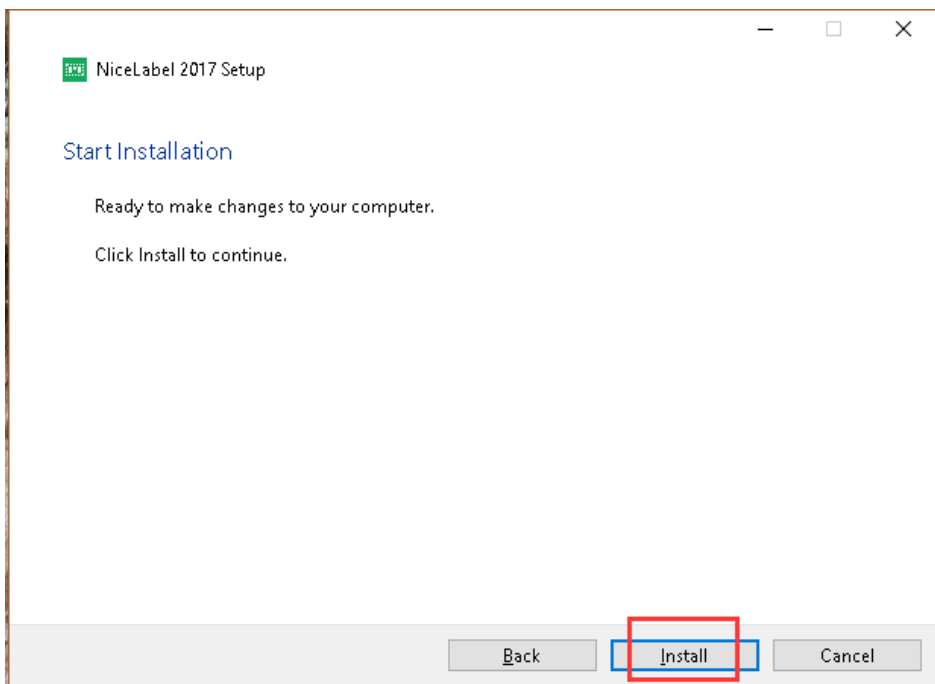
5- Don't select "Enhance support by ..." and Click "Customize Installed Modules"



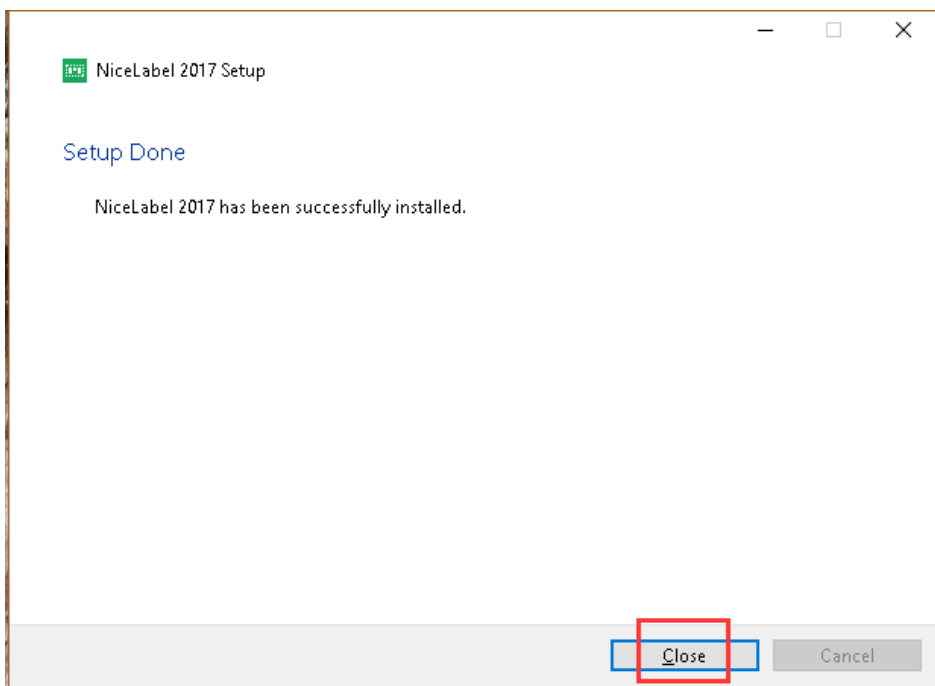
6- Don't select "Automation" and Click "Next"



7- Click "Install"

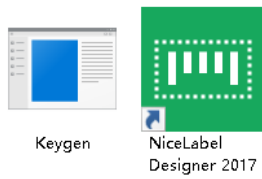


8- Click "Close"

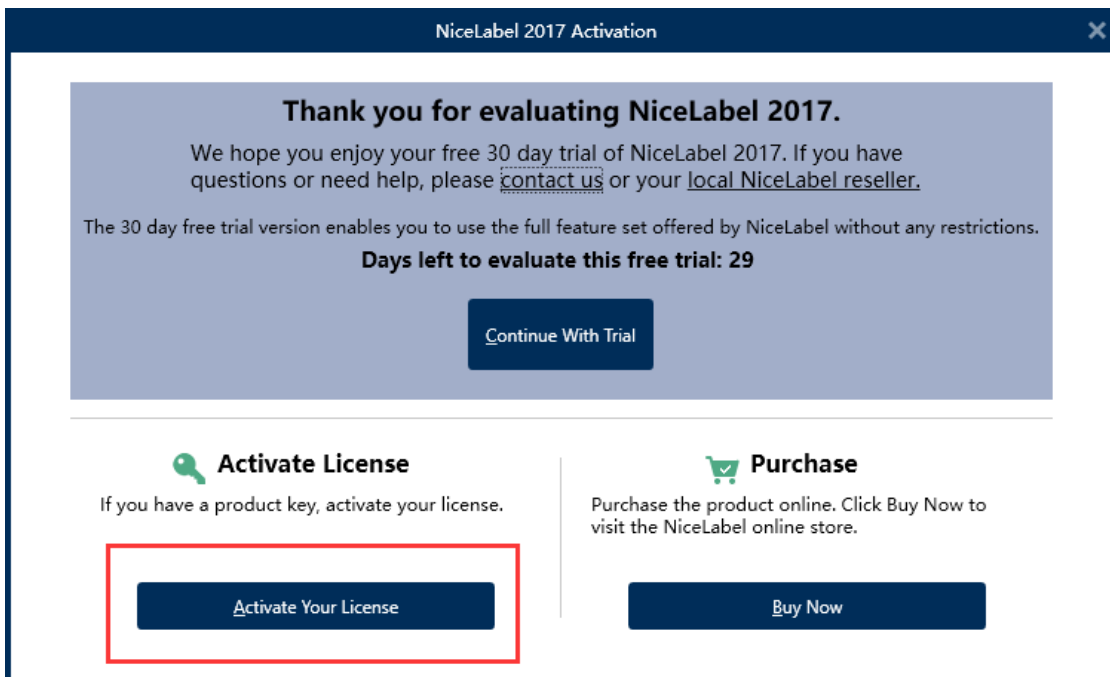


Activate Software

1- Click "Activate" and "Click "NiceLabel Designer 2017"



2- Click "Activate Your License"



3- Don't select "Notify me ..."and Click "activate offline"

NiceLabel 2017 Activation

Enter the information below to activate your product.

License Key: *

Name: *

Company: *

Country:

Email: *

☐ Notify me about software updates

By submitting this form you agree to our [Privacy policy](#).

Internet connection is required for online product activation. Click **activate offline** if the Internet connection is not available.

Activate Your License

4- Like this (below)

NiceLabel 2017 Activation

Enter the information below to activate your product.

License Key: *

Name: *

Company: *

Country:

Email: *

☐ Notify me about software updates

Registration Code:

Activation Code: *

Activation code is required for offline activation. Use a device with Internet connection to get the key on NiceLabel Activation web page, or call NiceLabel support.

To get the Activation code using a mobile device:

- [Click here](#) to open a window that displays barcode. Scan it using a mobile device with Internet access.
- Enter the code in the Activation code field.

To get the Activation code using a computer with Internet connection:

- [Click here](#) to copy the web activation link to your clipboard.
- Paste the link in web browser to open the NiceLabel Activation web page.
- Complete the registration process, write down the Activation code, and enter it in the Activation code field.

By submitting this form you agree to our [Privacy policy](#).

Activate Your License

5

- 1) Input the **License Key** from "Keygen" to "NiceLabel 2017 Activation"
- 2) Input **Registration Code** from "NiceLabel 2017 Activation" to "Keygen"
- 3) Click "**Generate**"
- 4) Input the **Activation Code** from "Keygen" to "NiceLabel 2017 Activation"
- 5) Click "**Activate Your License**"

NiceLabel 2017 Activation

Enter the information below to activate your product.

License Key: ✓

Name:

Company:

Country:

Email:

☐ Notify me about software updates

Registration Code:

Activation Code: ✓

Activation code is required for offline activation. Use a device with Internet connection to get the key on NiceLabel Activation web page, or call NiceLabel support.

To get the Activation code using a mobile device:

- [Click here](#) to open a window that displays barcode. Scan it using a mobile device with Internet access.
- Enter the code in the Activation code field.

To get the Activation code using a computer with Internet connection:

- [Click here](#) to copy the web activation link to your clipboard.
- Paste the link in web browser to open the NiceLabel Activation web page.
- Complete the registration process, write down the Activation code, and enter it in the Activation code field.

By submitting this form you agree to our [Privacy policy](#).

Activate Your License

6- Click "Skip"

Connect to Control Center

LMS license enables you to connect to Control Center.

After connecting to Control Center, the data from your workstation will be used for event monitoring, logging, print job monitoring, and detailed control of printing.

Select one of the available Control Center instances, or enter a custom instance name manually:

Check address

Click Skip to avoid connecting to Control Center. Establish the connection later using the Options dialog.

Connect Skip